



Asmae Association
**Sœur
Emmanuelle**



ANNUAL REPORT 2024



CONTENTS

03 Editorial and introduction to Asmae

08 Our work overseas

- **Building a fairer world: Sister Emmanuelle's legacy through our association**

- **Our work by country**
- **Multi-country programmes**

18 Our work in France

- **La Chrysalide and the Île aux enfants**
- **The Espace Petits Pas**
- **Yalla! For the Rights of the Child**

20 Our networks and advocacy

21 Our resources

- **Protection of children against Bullying and Sexual Abuse**
- **Employee and volunteer teams**
- **Volunteers in action and communication**
- **Our financial partners**
- **Our financial report**

In accordance with our values of equality and non-discrimination, Asmae strives to communicate in an inclusive manner. When reading this report, please note that all terminology used ("child", "young person", etc.) should be understood to include everyone, regardless of gender. Any gendered language should be understood to refer to people of all genders. No discrimination is in any way intentional.

Annual Report published by Asmae – Association Sœur Emmanuelle; Siret (company



registration number): 347 403 156 000 40; APE (business activity code): 8899B; Address: Immeuble le Méliès, 259-261 rue de Paris, 93100 Montreuil, France; Tel.: +33 (0)1 70 32 02 50; Fax: + 33 (0)1 55 86 32 81; Website: www.asmae.fr; Email: infos@asmae.fr; Chair of the association and Editor: Catherine Larrieu; Editorial board: Louise Brassart, Adrien Sallez, Lizanne Danan, Hugo Sanchez; Photo credits: © Asmae, © Léa Thomas, © Advertising agency: Les Présidents; Design: Stéphanie Poche; Printing: Imprimerie Vincent, May 2025; Copyright: June 2025, ISSN 2552-0253

Key figures

62,550 BENEFICIARIES

8 COUNTRIES
OF INTERVENTION

47 PARTNER ASSOCIATIONS

31 PROJECTS

180 PROFESSIONALS
WORLDWIDE

31 VOLUNTEERS

15,565 DONORS

44 YEARS OF EXPERIENCE
IN THE FIELD

OUR VALUES

Openness and closeness
Pragmatism
Acknowledging differences
Professionalism
and reciprocity

OUR VISION

"A fair world where children are guaranteed the opportunity to live and grow up in dignity within their families and their environments to become free men and women who can contribute to society".



EDITORIAL

It is my pleasure to send you our 2024 Annual Report, which outlines the key achievements in a year that was highly eventful and also marked by certain worrying developments.

62,550 children and young people have benefited from our initiatives in education, protection, socio-economic integration, parental support and awareness-raising. Beyond these figures, we should emphasise the commitment of our teams, who have striven for high levels of quality and impact. Across our eight countries, this has prominently taken the form of the operational introduction of our philosophy based on the rights of the child and the adoption of structural policies such as prevention of sexual violence and a focus on the general environment.

2024 was marked by the war in Lebanon, which had a serious impact on the countries and communities with which we work, especially in the South and in Beirut. I would like to pay tribute to our team, who joined forces to address the urgent needs of the children and the families. **500 people received personalised assistance, including survival kits, hygiene kits and school supplies.**

It's easy to imagine that Sister Emmanuelle would be proud of the work accomplished by Asmae and its teams. She would also urge us to do more; but in such difficult times, will we be actually able to? Constraints include historic state funding cuts for NGOs, conditions placed on aid to the countries of the South, and a narrowing of the democratic space.

This landscape of shadow and light can also be identified in the results of the first Children's Confidence Barometer produced by the Odoxa institute for Asmae. In it, we learn that more than **80% of children have confidence in the future, but are worried about precarious situations and the return of war in Europe.**

During 2025, we will carry out a two-pronged strategic mission. Firstly, we will evaluate our 2022-2025 plan; and secondly, this assessment will inform the development of our forthcoming 2030 strategy.

On behalf of the board of directors, the Asmae teams, and – above all – the partners with whom we work and the children and young people we support, I would like to extend my warmest thanks to you for your commitment and trust.

Catherine Larrieu
Chair

OUR MISSIONS

- To promote child and youth development through a global approach. To achieve this, Asmae also works to support families.
- To increase the capabilities of local people and structures working in the area of child and youth development, strengthening the synergies between them to maximise their social impact.
- To champion children's and young people's causes by raising awareness and speaking out.
- To experiment, to expand and to disseminate.

THE WORK OF ASMAE AND OUR PARTNERS AROUND THE WORLD

FRANCE Yalla! For the Rights of the Child

14,020 students and 10 adults' awareness raised

Background

- 31.3% of children have already suffered verbal abuse from children or adults²²
- 6% of Year 7 to Year 10 students (i.e. nearly 204,000 in total) report having been victims of bullying²³

Project team

2 professionals and 3 volunteers/trainees in civic services

FRANCE La Chrysalide

18 young women (aged 18-25) and their 29 children (aged 0-6)

30 children supported in the crèche

Background

- 330,000 people, 40% of whom are women, are homeless in France today²⁴
- Of the 2,046 children on the streets, 467 are under 3 years old. (UNICEF, August 2024)²⁵

Project team
36 professionals

FRANCE Espace Petits Pas

50 children and the 30 families they come from

Background

- More than 42,000 children are homeless and living in emergency accommodation or makeshift shelters, or on the streets.²⁶
- In France, 1 in 5 children are living below the poverty line²⁷

Project team
3 professionals

BURKINA FASO

24,750 beneficiaries

Areas of intervention

- Access to quality education
- Protecting children against all forms of violence and exploitation

Background

- 2 million people displaced within the country⁴
- 5,336 schools were closed; i.e. more than 20% of schools in the country, in February 2024⁵
- 1 in 5 children under five do not have full protection against the principal childhood diseases.⁶

Project team

14 professionals

IVORY COAST

1,850 beneficiaries

Areas of intervention

- Protecting children against all forms of violence and exploitation
- Vocational training and integration

Background

- 2.3 million children are involved in child labour¹
- 3 out of 5 girls and 2 out of 3 boys were victims of violence during their childhood²
- 53% of the target group over 15 years old are illiterate³

Project team

4 professionals

LEBANON

4,690 beneficiaries

Areas of intervention

- Vocational training and integration
- Emergencies
- Access to quality education

Background

- 26% of households consulted say their school-aged children don't go to school (+8% in just 6 months)¹³
- 1 in 3 children have no access to education¹⁴
- An estimated 1.2 million people have been displaced by the conflict¹⁵

Project team

9 professionals

EGYPT

3,610 beneficiaries

Areas of intervention

- Vocational training and integration
- Emergencies
- Access to quality education
- Protecting children against all forms of violence and exploitation

Background

- 500,000 Sudanese refugees have left for Egypt¹⁰
- 87% of primary school teachers have the minimum required qualifications¹¹
- 60% of Egypt's 104 million people were below or just above the poverty line¹²

Project team

15 professionals

INDIA

1,430 beneficiaries

Areas of intervention

- Vocational training and integration

Background

- 1/3 of the world's child brides live in India¹⁶
- Nearly 30% of school-age children drop out early¹⁷
- 45% of people aged 20-24 are unemployed¹⁸

Project team

Remote support for partner colleagues from Asmae head office

PHILIPPINES

5,730 beneficiaries

Areas of intervention

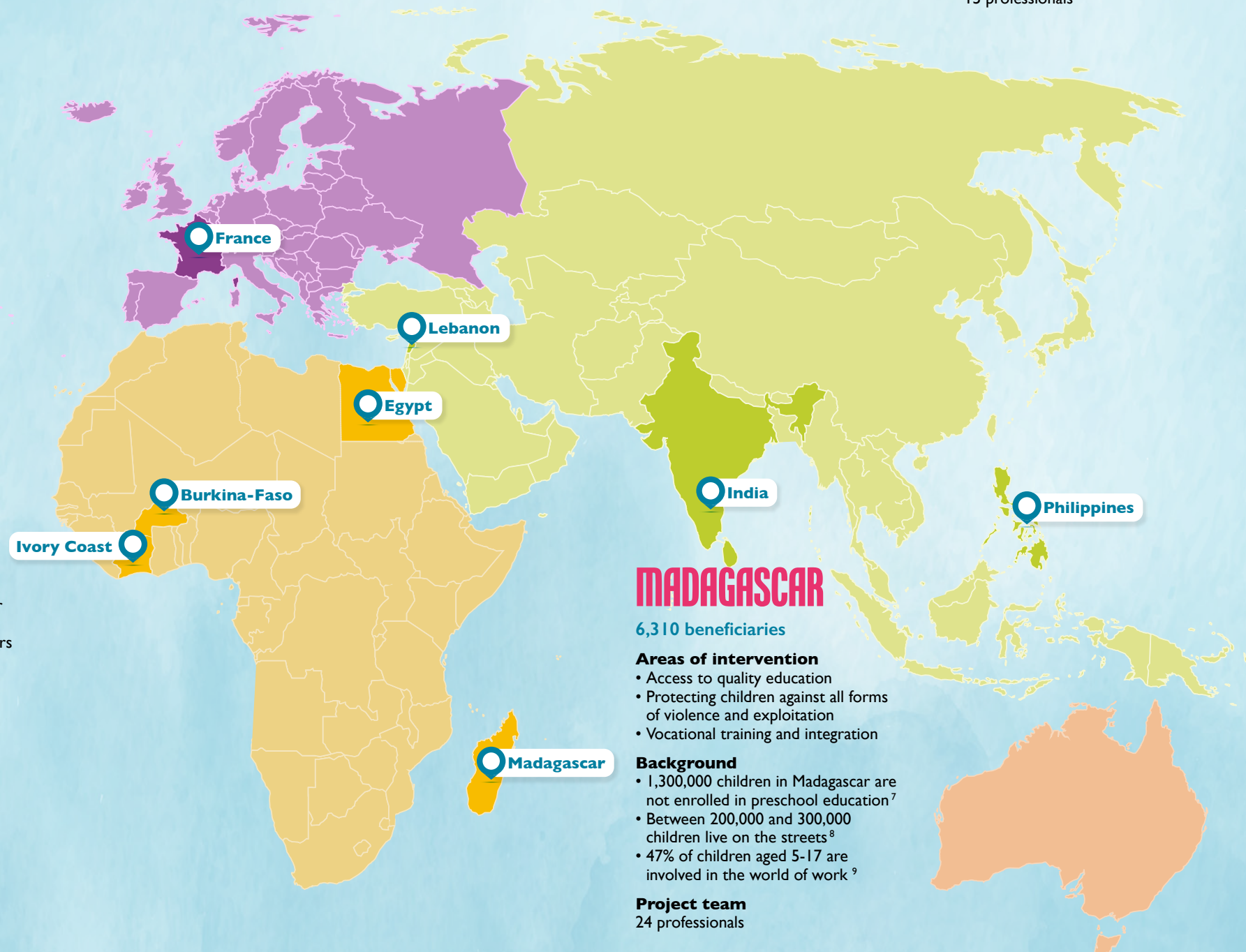
- Protecting children against all forms of violence and exploitation
- Emergencies
- Access to quality education
- Living alongside each other in a sustainable and peaceful world

Background

- In the Philippines, 7 million children are victims of sexual abuse every year¹⁷
- In Manila, 1 million children live on the streets¹⁸
- Nearly 2.85 million children aged 5-15 are not in school¹⁹

Project team

9 professionals



MADAGASCAR

6,310 beneficiaries

Areas of intervention

- Access to quality education
- Protecting children against all forms of violence and exploitation
- Vocational training and integration

Background

- 1,300,000 children in Madagascar are not enrolled in preschool education⁷
- Between 200,000 and 300,000 children live on the streets⁸
- 47% of children aged 5-17 are involved in the world of work⁹

Project team

24 professionals



**Si vous pensez
qu'elle va laisser faire
parce qu'elle n'est plus là,
c'est mal la connaître.**

Des millions d'enfants victimes des guerres perdent tout
et se retrouvent à la rue. Aidez-nous à les aider.

Asmae Association
SŒUR EMMANUELLE

Asmae's work

08

Our work overseas

- Building a fairer world: Sister Emmanuelle's legacy through our association
- Our work by country
- Multi-country programmes

18

Our work in France

- La Chrysalide and the Île aux enfants
- Espace Petits Pas
- Yalla! For Children's Rights

20

Our networks and advocacy



BUILDING A FAIRER WORLD: SISTER EMMANUELLE’S LEGACY THROUGH OUR ASSOCIATION

For the commitments of Sister Emmanuelle



By making her home with the rag-pickers of Cairo in a hut in the Egyptian slum of Ezbet El Nakhel, Sister Emmanuelle acted on her deep desire to work alongside people who are ignored and despised by society. In response to the needs expressed by children and young people, Sister Emmanuelle created Asmae, an association that now holds “utilité publique” (in the public interest) status in France. Without ever compromising the spirit of its founder, Asmae now covers eight countries and contributes to the implementation of public policies in support of the rights and education of the child, enabling children to achieve their full potential. In this way, children and young people around the world are our central focus.

Yalla!

In accordance with Sister Emmanuelle’s commitment, our international support organisation plays an active role in building the world of tomorrow. Faced with the crises and inequalities affecting children and young people around the world, our ambition for 2030 is to consolidate our actions on the ground, expand our geographical areas of operation and increase our ability to exert influence.

This ambition, along with our areas of focus and cross-cutting approaches, is fully in line with Asmae’s mission as an organisation, which is to build:

“A fair world where children are guaranteed the opportunity to live and grow up in dignity within their families and their environments to become free men and women who can contribute to society”.

Our areas of focus:

ACCESS TO QUALITY EDUCATION

- Preschool and early education
- Accessing and staying in the school system
- Support for quality teaching and learning
- Inclusive education
- Education in emergency situations

VOCATIONAL TRAINING AND INTEGRATION

- Guidance on making the right personal choices
- Vocational training tailored to the jobs market
- Quality teaching
- Employability and personal skills
- Support with finding work and joining/contacting companies
- Post-training monitoring for young people
- Openness to the world and citizenship

PROTECTING CHILDREN AGAINST ALL FORMS OF VIOLENCE AND EXPLOITATION WHILE PROMOTING THEIR WELL-BEING

- Preventing violence and harmful practices
- Creating protective environments by strengthening child protection systems
- Tailored support for child victims of violence

LIVING ALONGSIDE EACH OTHER IN A SUSTAINABLE AND PEACEFUL WORLD

- Encouraging children and young people to get involved and take responsibility
- Promoting civic engagement among children and young people: community initiatives, peer-to-peer learning, youth-led advocacy
- Encouraging social cohesion, conflict prevention and peace building
- Promoting gender equality
- Encouraging respect for the environment and combatting climate change

Our cross-cutting approaches

These are central to our work, and are based on four key pillars:

- **An approach based on the rights of the child**, recognising specific rights for children and underlining the obligations of responsible stakeholders (families, institutions, etc.) to guarantee access to these rights and their protection.
- **Promoting gender equality**, ensuring that every child and every young person has the same rights, whatever their gender.
- **Participation**, which makes children and young people stakeholders in their own development and the changes happening in society.
- **Inclusion**, which makes it possible to take the specific needs of every child into account and offer services adapted to even the most vulnerable, including children with disabilities, so that nobody is excluded.

OUR WORK OVERSEAS

IVORY COAST AFRICA



2.3 million children are involved in child labour¹

3 out of 5 girls and **2 out of 3 boys** were victims of violence during their childhood²

53% of the target group over 15 years old are illiterate³

PROTECTING CHILDREN AGAINST ALL FORMS OF VIOLENCE AND EXPLOITATION WHILE PROMOTING THEIR WELL-BEING VOCATIONAL TRAINING AND INTEGRATION

Ongoing projects

- Early childhood protection and education (PEACE) | **1,600 children**
- Young Agents of Change for the Future (J2A) | **250 beneficiaries**

1 850 beneficiaries

Partners

Wo Pile Sanga, SOS Violence Sexuelles, Korhogo Complexe Socio-Éducatif, Korhogo Centre Social, Korhogo Association d’Enfants et Jeunes Travailleurs, Agence Nationale d’Aide à l’Enfance en Danger (ANAED) and Agence Emploi Jeunes (AEJ)



SPOTLIGHT

The PEACE project: bringing hope to children in conflict zones

Armed conflicts in the region are leading to population movements towards Ivory Coast. In these crisis situations, the fundamental rights of children are compromised. The **PEACE - Protégeons les Enfants Affectés par les Conflits ou l’Exclusion** (Protecting Children Affected by Conflicts or Exclusion) programme has been created by Asmae based on the needs of the youngest in order to guarantee them a protective environment.

Timongo, who joined the programme at age 6, has Down syndrome. Like many children with disabilities, she faces almost total exclusion from education systems. Others such as Balkissa, who is under one year old, suffer from severe malnutrition.

PEACE works extensively to identify these children in distress. Through a tailor-made support programme, PEACE provides them with the protective framework which enables them to grow and develop in a positive and healthy way.

Using direct engagement and an immersive approach, a theatre-forum initiative invites the community to reflect on their own practices and provides a clearer understanding of the messages being delivered. Awareness-raising efforts are aimed at children, parents and the community at large. They discuss the importance of access to education, individuals’ rights, risks from violence, child marriage and female genital mutilation. At the same time, they participate in play activities that encourage their personal development. Asmae and its partner Wo Pile Sanga also identify children at risk and provide support tailored to the needs identified. In addition, personalised monitoring programmes are offered to improve access to medical care, support for school education and nutritional assistance.

PEACE enabled Timongo to join a Special Education Centre, having received medical assistance for himself and psychosocial support for his family. Balkissa received care at our partner’s nutritional centre, and is now a perfectly healthy baby.

Financial partner: private donor



Displaced family

TESTIMONY Kaouassi, a father of six children who now have access to school with PEACE



“A lack of funds meant that none of my children could go to school when we arrived in Ivory Coast. When agents from Asmae and its partner WO PILE SANGA told me that they would be educating my children as part of the support for beneficiaries of the PEACE project, I was very relieved. Since they started school, I’ve noticed changes in my children: they are happy and fulfilled, and the youngest one, who previously understood no French, can now say a few words. They have made friends, and their teachers tell us that they are working well in class.”



2 million people displaced within the country⁴
5,336 schools, i.e. more than 20% of schools in the country, were closed in February 2024⁵
1 in 5 children under five do not have full protection against the main childhood diseases

PROTECTING CHILDREN AGAINST ALL FORMS OF VIOLENCE AND EXPLOITATION WHILE PROMOTING THEIR WELL-BEING
ACCESS TO QUALITY EDUCATION

Ongoing projects

- Fulfilled Early Childhoods | **920 beneficiaries**
- Growing Together | **2,840 beneficiaries**
- Making Young People Agents of Change (Cap Jeunesse) | **4,970 beneficiaries**
- Early childhood protection and education (PEACE) | **16,020 beneficiaries**

 **24 750 beneficiaries**

Partners

Association Initiative Communautaire Changer la Vie/Nazemse (ICCV/N), UN-ABPAM/EJA, ABAPE, Samenti, Association des Jeunes pour le Bien-être Familial (AJBF), Association Coalition des Initiatives Communautaires pour le Développement (ACICD), Terre des Hommes, Educo, Intersos, Centre d'Etudes et d'Appui conseil en Travail Social (CEATS)



SPOTLIGHT

Fighting exclusion: young children actively engaged in their own development

In Burkina Faso, more than 2 million people are displaced within their own country. Entire families have been forced to flee as a result of growing insecurity. They leave their homes, children drop out of school, and their lives need rebuilding.

The **PEACE: Protect Children Affected by Conflict or Exclusion** programme enters this arena as a project that brings peace and hope, with a twofold mission of development and protection.

Aminata – who lives in Dédougou, in the west of the country – is six years old. She was displaced along with her mother and, like thousands of other children, no longer attends school. Amédée was forced to flee his village following an attack. He was injured, and received care from Asmae's team.

Supported by its local partners, Asmae oversees several activities in which displaced children, along with children from the “host” communities, play an active role: educational activities, games, singing, dancing and reading. Some of the most notable initiatives include “biblio-motos” – mobile motorcycle-based libraries giving children the opportunity to access books in isolated areas of refuge, and continue their development. At the same time, PEACE also aims to improve protective support for displaced children. During educational activities, local Asmae-trained facilitators identify children requiring specific support.

Through the PEACE programme, Aminata is learning to read, count and speak French, along with another **12,390 children** who have benefited from this initiative. Amédée was taken to hospital and the costs of treating his injuries were covered by Asmae, as has been the case for some 197 children. Now enrolled at a school, he is proud to say that he is top of his class, and that he is no longer afraid.

Financial partner: Private donor



Use of the “Yam Wekré” picture book by early childhood participants

TESTIMONY Samira, 12, has been able to continue her schooling thanks to Asmae's support

“One day, I took part in an activity at the child development club, and the leader gave my mother a piece of paper that let her take me to the “action sociale” [a support structure]. They gave me a school bag and a bicycle to get to school. Now I'm not tired any more, and I don't sleep in class, so I can follow the lessons properly. I can even eat with my family every lunchtime. Before that, I would stay at school without eating because of the distance.”

1,300,000 children in Madagascar are not enrolled in preschool education⁷

Between **200,000** and **300,000** children live on the streets⁸

47% of children aged 5-17 are involved in the world of work⁹

ACCESS TO QUALITY EDUCATION
PROTECTING CHILDREN AGAINST ALL FORMS OF VIOLENCE AND EXPLOITATION TRAINING AND PROFESSIONAL INTEGRATION

Ongoing projects

- Strengthening children's social and educational inclusion (Ankizy) | **1,420 beneficiaries**
- Improving the quality of socio-educational support in a centre for homeless people | **210 beneficiaries**
- Improving access to quality education and protection mechanisms (Mivelatra) | **3,830 beneficiaries**
- Making Young People Agents of Change (Cap Jeunesse) | **260 beneficiaries**
- Young Agents of Change for the Future (J2A) | **590 beneficiaries**

 **6 310 beneficiaries**

Partners

AIC Anosizato, HARDI, MANDA, Centre Betania Ankasina, Association Internationale des Charités Anosizato (AIC), Communauté Urbaine d'Antananarivo (CUA), ONG Vahatra, Grandir à Antsirabé, Collège / Lycée Picot de Clorivière, L'Organisation de la Société Civile d'Antsirabe Pour l'Enfance (OSCAPE), SPV Felana, Graines de Bitume (GDB), Gazela, Hafa, ONG I-BIRA



SPOTLIGHT

In the capital, street children are building a future for themselves

20,000: the number of street children deprived of their fundamental rights recorded in Antananarivo, the capital of Madagascar. Faced with immense daily challenges, these young people's future prospects are being compromised by a lack of protection and of access to education and health. One such child is five-year-old Tahina, who lived and begged on the streets with her mother and older brother so that they could eat once a day. In response to this situation, Asmae – together with its local partners – is working at the Akany larivo Mivoy (AIM) centre. This place of renewal and hope for street families was initially intended to be a temporary refuge. Quickly transformed into a permanent accommodation facility, the centre now offers a safe, welcoming environment to children and their families. It provides daily support in medical care, general health, nutrition and education. Two classes and spaces welcome 3-5-year-olds and 6-12-year-olds, allowing them to learn, interact and play with each other and develop in an ideal environment away from the street. Asmae teams also offer parents the opportunity to get involved in discussion times and parental education sessions. Respect and kindness are central to the process implemented by Asmae and its local partners. It is a place where parents can strengthen their parenting skills, equipping them with the means to promote harmonious family relationships. In this way, Asmae's work is supporting 120 families and 80 children who are gradually regaining confidence, becoming more independent and seeing themselves as active participants in the society of tomorrow. Upon arrival at the AIM centre, Tahina and her family were able to eat three meals a day and receive clothing, and Tahina joined other children in a classroom.

Financial partner: Ile-de-France region



Students involved in the AIM project

TESTIMONY Mialy, 10, a resident at the AIM centre

“I've been living at the AIM centre for a year with my mother, brothers and sisters. I like spending time with the other children living there, especially when there are entertainment activities. I get along well with them. In the activity room, I enjoy exploring new books. At the centre, I like the atmosphere we have with our teachers. I've been able to improve my French and my arithmetic skills.”





500,000 Sudanese refugees have left for Egypt ¹⁰

87% of primary school teachers have the minimum required qualifications ¹¹

60% of Egypt's 104 million people were below or just above the poverty line ¹²

PROFESSIONAL TRAINING AND INTEGRATION | EMERGENCY
ACCESS TO QUALITY EDUCATION | PROTECTING CHILDREN AGAINST ALL FORMS OF VIOLENCE AND EXPLOITATION

Ongoing projects

- Integrating vulnerable young people with disabilities socio-professionally (YIEP) | **100 beneficiaries**
- Emergency | **630 beneficiaries**
- Making Young People Agents of Change (Cap Jeunesse) | **100 beneficiaries**
- Early childhood protection and education (PEACE) | **2,780 beneficiaries**

3 610
beneficiaries

Partners

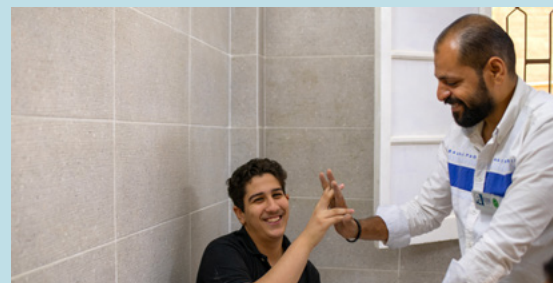
Seti-Caritas, Egyptian Association for Comprehensive Development (EACD), Kayan "Society For Persons with Disabilities", Life Vision For Development (LFVD),



SPOTLIGHT

Young people with disabilities: active participants in their own future

In Egypt, young people with disabilities face significant discrimination in the job market. 300 young people in vulnerable situations, including 100 with disabilities, have taken advantage of the tools provided by Asmae's **YIEP programme** to access the world of work and change their destinies. Because access to education is more difficult for people with disabilities, these young people often have below-average qualifications. In addition to limiting the scope of tasks they can perform, disability sometimes also reduces the size of the social networks they can draw upon. These young people, aged 15 to 24, took part in individual sessions run by Asmae. They were able to fine-tune their wishes and specify their professional goals and desires. Upon completion of these workshops, they discovered a wide range of suitable training courses: IT, mechanics, cooking and sewing. Particular attention was paid to combating gender stereotypes and thus encourage young women and men to choose their own path freely. Once trained, they learn how to improve their chances on the job market: creating their CV, preparing for interviews, and strategies for contacting companies. These crucial steps have enabled them to enhance their skills and gain a foothold in the job market. For some, the future lies in entrepreneurship. Through the "Start Your Business" programme, 180 young people, including 30 with disabilities, learned how to make their ideas a reality. The most promising projects were promoted by Asmae, and received financial or in-kind support to make them a reality. Through the YIEP programme, these young people are acquiring the skills they need to overcome barriers and transform their future!



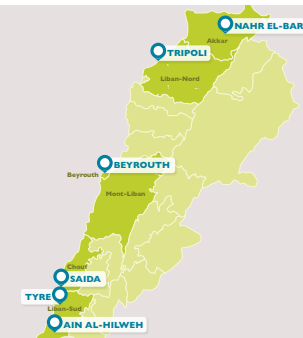
A young person taking part in an activity organized by YIEP with a member of Asmae Egypt.

The project is funded by Asmae, Paprec and the European Union



TESTIMONY Sayed, 27, trained in entrepreneurship with our "Start Your Business" programme

"I've wanted to open a cleaning products store since I was at university. A friend and I decided to open one and take our chance. A few months later, we noticed that the store wasn't making a profit. The training helped show me what we were doing wrong. I now understand the importance of tracking our spending, and recording debits and credits. In addition, the training helped me understand how to create offers and discounts for better sales."



26% of households say their school-aged children don't go to school (+8% in just 6 months) ¹³

31% of young people aren't in education, training or employment ¹⁴

20% of the population in Lebanon are Syrian refugees ¹⁵

TRAINING AND PROFESSIONAL INTEGRATION | EMERGENCY | ACCESS TO QUALITY EDUCATION

Ongoing projects

- Yalla for Employment and Protection (YIEP) | **490 beneficiaries**
- Promoting the socio-economic inclusion of the most vulnerable young people (Lebanese / Syrian refugees), particularly young people with disabilities, in the Chouf region | **270 beneficiaries**
- Intervention in Support of Internally Displaced Persons | **490 beneficiaries**
- Support for an inclusive early childhood (SPECIAL) | **3,400 beneficiaries**
- Making Young People Agents of Change (Cap Jeunesse) | **40 beneficiaries**

4 690
beneficiaries

Partners

Specialised Centre for Accessible Learning and Education (SCALE), Farah Social Foundation, Naba'a, Imam Sadr Foundation, NAHNOO.



SPOTLIGHT

Thousands of children scarred by the violence of war

In Lebanon, 350,000 children are in extremely vulnerable conditions and face forced displacement as a result of war in 2024. Faced with this situation, Asmae needed to adjust its projects to meet the urgent needs of vulnerable local people.

These children are exposed to physical and psychological risks. The testimonies supplied to our field teams by these groups emphasise the urgency of guaranteeing children and their families shelter, food and psychosocial support to get through this crisis. The findings are stark: sleep disorders, anxiety and depressive symptoms are numerous, underlining the importance of being able to offer them protection and support. Children in particular have experienced profound trauma. As a result, the Lebanese teams from Asmae and their local partners have implemented an emergency response to provide these children with a quality education and protect their rights.

Thanks to the unwavering commitment of these local teams, Asmae has been able to introduce a tailored programme that addresses the specific needs expressed by young children and their families. Distributions of emergency kits, hygiene kits and educational kits were carried out in response. Asmae's priority on the ground remains clear in respect of the 120 families receiving support: adapting to the urgency of the situation, meeting the essential survival needs of the children and families in terms of protection, access to hygiene, food, education or psychosocial support. In 2024, amid this background of humanitarian crisis, Asmae renewed its call for respect for international humanitarian law. The protection of civilians and civilian infrastructure is paramount.

Financial partner: Stop Hunger endowment fund



A child accompanied by an Asmae member during a distribution

TESTIMONY While the war was still ongoing, Leila, 20, participated in awareness sessions on gender-based violence, prevention of sexual exploitation and abuse, and psychological stress.

"It was a difficult experience that required a lot of adjustment. Leaving home was the hardest part, but as a mother, I'm determined to be strong for my children. I'm very grateful for the awareness sessions. They really helped us adapt, and provided us with the necessary support in such a time of crisis."



One third of the world's child brides live in India ¹⁶
Nearly 30% of school-age children drop out early ¹⁷
45% of people aged 20-24 are unemployed ¹⁸

VOCATIONAL TRAINING AND INTEGRATION

Ongoing projects

- Making Young People Agents of Change (Cap Jeunesse) | **1,430 beneficiaries**

Partners

Arunodhaya Centre for Street and Working Children.

1 430
beneficiaries

SPOTLIGHT

Professional Integration: young people take control of their own future

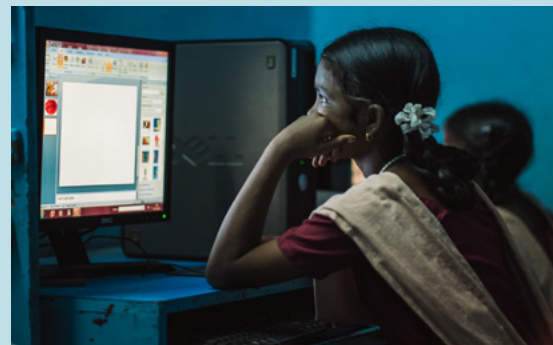
In India, 50% of the population is less than 25 years old. Young people are a central concern in major issues such as education and access to employment. In the city of Chennai, where many communities are excluded and stigmatised, Asmae and its local partner, the Arunodhaya association, have set up the "Cap Jeunesse" programme. Its aim is to ensure that the most vulnerable young people can play a role in society and find work, and to promote their rights to education and protection. Participation is a core value. It is driven by two key factors: sharing information, and developing the capacities of stakeholders such as women, children, teenagers, volunteers and staff. This enables them to engage actively in programme decision-making and implementation.

With Arunodhaya's support, 150 young people were able to define their career path and plans more precisely, 140 young people received assistance in accessing appropriate technical and vocational training, and 60 of them subsequently found employment.

Between 2024 and 2027, 480 young people will take part in the new professional IT training courses. This enables them to improve skills such as leadership, decision-making and emotional management. At the end of the three-month courses, they receive a diploma, offering them a route into career roles such as data entry operators and accountants. In 2024, 4 sessions were held. Alongside this initiative, in order to assist with their integration, Arunodhaya organises company visits, which act as job opportunities for these young people after graduation.

Through this project, Asmae is also supporting secondary-school students, who participate in sessions on career guidance and preparation for adult life.

Financial partner: French Development Agency



Young girls trained in computer skills



TESTIMONY Arjun, 20, found a career after training with our partner

"In January 2024, I joined the Arunodhaya IT Centre, with support from Asmae to improve my career prospects. Although I was studying at university, I had no experience with computing. Thanks to the courses (including IT and English) I took at the Arunodhaya training centre, I obtained a diploma in March 2024. I quickly found an internship position at Royal Enfield, a motorcycle manufacturing company. The centre and Asmae really helped me to succeed and kick-start my career."

7 million children are victims of sexual abuse every year in the Philippines ¹⁹

1 million children live on the streets of Manila ²⁰

Some **2.85 million** children aged 5-15 are not in school ²¹



PROTECTING CHILDREN AGAINST ALL FORMS OF VIOLENCE AND EXPLOITATION WHILE PROMOTING THEIR WELL-BEING

EMERGENCY ACCESS TO QUALITY EDUCATION LIVING ALONGSIDE EACH OTHER IN A SUSTAINABLE AND PEACEFUL WORLD

Ongoing projects

- Helping to improve the living conditions of street children and families - Phase 2 and 3 (CISS) | **1,120 beneficiaries**
- Protecting children in extreme poverty in Southeast Asia (PEGASE) | **840 beneficiaries**
- Emergency Intervention in support of victims of Typhoon Kristina | **1,760 beneficiaries**
- Inclusive education for children with disabilities – Phase 2 | **300 beneficiaries**
- Making Young People Agents of Change (Cap Jeunesse) | **240 beneficiaries**
- Early childhood protection and education (PEACE) | **1,470 beneficiaries**

Partners

Bahay Tuluyan (BT), Kanlungan sa Erma Ministry (KSEM), Child Hope Philippines (CHAP), Las Pinas Persons with Disabilities, Heart Outreach Dev't, Inc., Zamboanga Basilan Integrated Development Alliance Inc (ZABIDA), KKI, Department of Social Welfare & Development – regional office for Batangas City and region, City Social Welfare and Development Office

5 730
beneficiaries

SPOTLIGHT

Mobile schools: a solution for street children

Manila, a metropolis of 28 million people, has nearly one million children growing up on its streets. Left to their own devices, they struggle to survive, eat or play. For more than six years, Asmae has been working to enable them to access new horizons. Access to education is a major challenge for these children. Lacking identity papers or access to nursery school, they are often excluded from the formal education system. To break this cycle of poverty, Asmae and its partners have set up an innovative initiative: a mobile school that comes to where street children are. This travelling school offers children the foundations of informal education and helps integrate them into society. Through this early support, they gain in confidence and are potentially able to make the transition to primary school. At the same time, Asmae carries out advocacy work with families to raise awareness of the importance of civil registration of children. Asmae also partners with the authorities, establishing dedicated teams to support families with these formalities. This partnership has two aims: to ensure such initiatives have a sustainable and central place in public policies, and to guarantee children the fundamental right to education, protection and play, in accordance with the International Convention on the Rights of the Child. Thanks to this project, 1,000 children under 14 have participated in alternative education sessions to encourage their autonomy. 90 young people aged 15 to 20 have also taken their search for work to another level by receiving technical training, improving their social skills, writing CVs and taking advantage of networking with companies. They embody the hope for a better future, and can dream of better days to come when they will be active citizens making a positive contribution to the growth of their community.

Financial partner: the French Development Agency



Streets children participating in an alternative education session



TESTIMONY Ruth, 20, is studying via the alternative learning system

"I'm now continuing my studies after graduating from the alternative learning system. I'm driven by a desire to give something back, so I'm focusing on volunteering with other children in street situations. I'm proud of myself because, despite the difficulties my family faced, I succeeded. Alternative education has had a significant impact on my life: without it, I wouldn't have been able to continue my studies. I want to give other children living on the street this message: you are important, and you have the right to feel safe and happy."

CAP JEUNESSE: A SECOND PHASE OF THE PROJECT THAT WORKS CLOSELY WITH YOUNG PEOPLE

 **January 2024 to December 2026**

Goal: to promote young people's ability to take action

20% of young people worldwide are not in education, employment or training. Asmae is fighting against this cause of vulnerability by implementing the second phase of the Cap Jeunesse programme in Burkina Faso, Madagascar, Egypt, the Philippines and Lebanon. We work to ensure these young people can play a role in society and find work, while promoting their rights to education and protection.

Nashwa Fayed Ibrahim,
Country Director – Asmae Egypt, testifies to the impact of the initiatives carried out within the programme:



“This second phase extends Asmae’s scope of action. It is based on youth engagement with a focus on gender, inclusion and citizenship. This allows us to focus on the subject of gender-based issues and discrimination during awareness-raising workshops that are highly popular with young people.

In Egypt, we are very clearly seeing the beneficial aspects this has on young people. 113 young girls and boys were made aware of the issues of inclusion and gender equality. 50 workshops were run by Asmae with partner organisations, aimed at delivering education tailored to young people with disabilities. Teaching, support for families, and an approach based on the Rights of the Child – especially those with disabilities – were all themes that were addressed during these workshops.

The young people also received training in the complementary disciplines of communication, leadership, collaboration and civic engagement. This approach has proven highly effective, as it builds the confidence and determination of the young people who get involved in the activities, and encourages engagement with their peers.”

Financial partners: French Development Agency, Mille et un Repas, Sancta Devota foundation, Air France foundation, Technip Energies endowment fund, Transatlantique endowment fund, GEOY endowment fund

J2A: YOUNG PEOPLE ARE PUSHING OPEN THE DOORS TO THE PROFESSIONAL WORLD

 **November 2023 – October 2026**

Goal: to encourage emancipatory socio-professional integration among at-risk young people from urban and suburban districts in Ivory Coast and Madagascar.

The J2A programme is aimed at all young people in Madagascar and Ivory Coast, whether they have dropped out of school, are living on the streets or living in precarious conditions. In conjunction with its local partners, Asmae ensures that these young people benefit from career guidance activities, enabling them to find the best routes towards quality vocational training. Within the J2A programme, young people take ownership of their professional future, all within a holistic approach. They can then enter different professional sectors such as agriculture, textiles, sewing, plumbing, electrical work and even hairdressing.

Rozenn Coraud Kiendrebeogo,
Country Director – Asmae Ivory Coast, testifies to the impact of the initiatives carried out within the programme:



“The J2A programme aims to promote the emancipatory socio-professional integration of young people aged 14 to 25, and particularly young women, by emphasising the participation of young people in the programme, enabling them to develop many essential skills for socio-professional integration and a successful transition to adulthood. At the same time, Asmae supports the partner’s training centre by strengthening its technical and organisational abilities, ensuring the quality of the supplied training.

In Ivory Coast, 120 young people have been working alongside us for three years. Every young person is free to choose the path that interests them, regardless of gender. Those who need it can participate in the literacy sessions that we run. They are also very interested in sessions dedicated to developing skills they require for their integration into the professional world, such as strengthening their self-confidence and self-esteem, communicating in professional environments, punctuality and professional attitude. Youth clubs run awareness sessions for all young people in training on several themes such as women’s rights and gender-based violence, including domestic and sexual violence. The goal is to make young people active participants in change.”

Financial partner: French Development Agency

PEACE: ADVANCING LEGISLATION FOR UPHOLDING THE RIGHTS OF THE CHILD

 **January 2022 – December 2025**

Goal: to promote respect for the rights of displaced or excluded children and teenagers to education and protection in Burkina Faso, Egypt, the Philippines and Ivory Coast.

Lastly, faced with situations of conflict or exclusion in Burkina Faso, Egypt, the Philippines and Ivory Coast, the PEACE programme promotes the protection of children by raising awareness of the importance of their rights, the importance of protecting them and guaranteeing them an education.

Michael E. Bismar,
Country Director – Asmae Philippines, testifies to the impact of the initiatives carried out within the programme:



“The field teams are running advocacy initiatives aimed at increasing the implementation of, and compliance with, child protection policies. Our goal is an ambitious one: to obtain recognition of the rights of discriminated communities, such as the Sama Bajau people here in the Philippines, whose births are not registered by the country’s government bodies. In July 2024, our commitment contributed to the creation of a media form on the Civil Registration and Vital Statistics (CRVS) bill put before the Congress of the Philippines, aimed at guaranteeing access to the identity of children from indigenous communities who are living on the streets.

Throughout the PEACE project, we ensure that we integrate the Approach based on the Rights of the Child, which is in turn based on the International Convention of the Rights of the Child. This approach informs the way in which we shape our interventions. The means by which we engage in partnerships with the various spheres of influence that have a direct or indirect impact on child development and well-being is also of key importance. Parents, the community, civil society organisations and national authorities are closely involved in our initiatives to ensure greater long-term impact.”

Financial partners: Technip Energies endowment fund, Sister Emmanuelle Belgium and a major private donor.



Children can learn, interact and play at the Akany Iarivo Mivoy (AIM) centre in Madagascar.

“LA CHRYSALIDE” AND THE ÎLE AUX ENFANTS: A NEW START FOR MOTHERS AND THEIR CHILDREN

Upon her return to France, Sister Emmanuelle alerted public opinion to social issues and spoke of the great emotional distress affecting many families in France. Since 2006, the “La Chrysalide” maternal support centre has been welcoming single mothers with young children aged 0 to 6 who have been left vulnerable by difficult and violent experiences. The “Île aux Enfants” is a crèche for these children, and also for children from the town of Bobigny. We look back at the past year with Sophie Royer, the new director of the maternal support centre.

AT “LA CHRYSALIDE”, VULNERABLE MOTHERS ARE REBUILDING THEIR LIVES

Can you tell us what makes the maternal support centre different?

The maternal support centre enables mothers to rebuild their lives, both psychologically and physically, with the help of a secure living environment. In situations where the mother-child bond is often fragile, these women are offered comprehensive social support and psychological and medical care, generally for an average duration of three years. Children are also a key focus of this system, and are supervised by the teams in their early years.

What event has characterised 2024?

For the first time since its creation, the maternal support centre took in under-age mothers from two mother-and-child centres in the department. The teams and supervisors from these two organisations were able to share best practices with the “La Chrysalide” teams. In addition, the team of social workers has also been completely overhauled. This new stability has enabled “La Chrysalide” to welcome and support 18 families.

Among all the women you’ve assisted, is there one whose journey has had a particular impact on you?

The name I’ll mention is Ms M., who lived in Equatorial Guinea until the age of 8. Upon arrival at the maternal support centre, she told us that from her youngest childhood, her mother had been physically and psychologically abusive towards her. She gave birth to her first baby at the age of 15. When she was 16, she arrived in France. Shortly afterwards, her mother started being violent towards her again, and she was even excluded from the family home. She continued her studies, but discovered she was pregnant. She gave birth to her second child and obtained her baccalaureate the same year.

The care within the maternal support centre lasts for just over a year and a half, and we have provided comprehensive support. The children’s father and the family live in the provinces, and family isolation is a major issue. She has been able to build a calmer relationship with her mother, and the children’s father is growing into his role.

At “La Chrysalide”, Ms M. is receiving psychological support from specialists for her trauma and on her parental role. This has enabled her to examine her role in the mother-child relationship and express her concerns. The team has reassured her regarding her many maternal skills, as Ms M. is attentive to her children’s well-being and development. Having received support with her administrative applications, she found accommodation in the summer of 2024 and signed a work-study contract with EDF. Through networking and partnership work, she was able to leave the maternal support centre with a job and a crèche care solution for her youngest child.

What are you hoping to achieve in the coming year?

In 2025, my goal is to develop activities and stays for families, with the aim of reducing the feeling of being “locked in”. It’s very important to be able to offer them a window onto the outside world. Another goal is to consolidate our teams.

THE “ÎLE AUX ENFANTS”: PROMOTING ANCHORED LIVES AND DIVERSITY

How does the “Île aux enfants” support children’s development?

Our crèche promotes anchored lives and diversity. The crèche comprises a multidisciplinary team (a head of department, two early childhood educators, a paediatrician, a psychologist, a psychomotor therapist and 14 care assistants), offering comprehensive care for all children and an extraordinarily welcoming environment. These early childhood specialists ensure the well-being and proper development of the children while remaining attentive to their needs.

How does it work?

A total of 29 beds are available, including 12 for families from Bobigny. Each child is looked after by a care assistant. In addition, the fact that the crèche is adjacent to the “La Chrysalide” maternal support centre is a very welcome benefit: it enables mothers to find time for themselves, complete official paperwork, search for jobs and work on parental relationships via the tools made available to them. The close partnership between the crèche professionals and the maternal support centre ensures a strong, complementary ability to respond and adapt; this enables complex situations to be defused and promotes the quality of life of the mothers and children.

Among all the babies the crèche has welcomed, is there one whose journey has had a particular impact on you?

Let’s call him P. He was welcomed, along with his family, at a Mother-And-Child Centre as part of a protective intervention. P had been a victim of domestic violence and physical and psychological abuse.

We therefore arranged for emergency placement at the crèche. From his earliest days there, the educational team and the care assistant observed developmental problems and great discomfort. This manifested as avoidance of eye contact and withdrawal from social interaction. P would not play, and would line objects up facing each other. He had no verbal language, and showed no desire to communicate. Mealtimes were very challenging, and he exhibited extreme sensitivity. Through joint work between the crèche’s educational team and the CME, along with the exceptionally high-quality work of the care assistant, we began to observe gradual positive changes. In the final months of his time at the nursery, P was able to engage with his care assistant and the crèche staff. He started to cope with playing, and the range of foods he was willing to eat gradually expanded. Regarding language, a few words began to emerge. When he left the crèche two years later, a connection had been established with the nursery school and a phased integration was arranged; initially for a few hours, then for half-days, and later for full days.

Financial partners: Seine-Saint-Denis Local Authority and Bobigny Council, CAF

“ESPACE PETITS PAS”: PARENTS STRENGTHEN BONDS WITH THEIR CHILDREN THROUGH PLAY

In Seine-Saint-Denis, 5,261 children live in 125 halfway-houses. 1,448 of them are under the age of three. Overcrowding and a shortage of play spaces and toys create living conditions that hinder children’s cognitive and psychomotor development.

In response, Asmae launched L’Espace Petits Pas (EPP) in 2020. This mobile system travels directly around the association’s halfway-house partners on a set schedule, creating a consistent space where resident families can find stability and support. This mobile space for children and parents is specifically designed to operate directly within temporary shelters, helping to re-establish secure, nurturing environments that foster trust between parents and children.

Through sensory play, construction and motor games and social and cooperative activities, the sessions encourage children’s creativity and self-expression while supporting their emotional and cognitive development. In this space, parents are recognised as the experts regarding their children. This attitude enables them to regain confidence and believe once more in their own long-term ability to nurture and support their children. Parents participate in activities such as motor skills and story sessions, and also group discussions that cover key themes like sleep, language development and the key importance of setting boundaries for healthy child development.

“I like it so much here, I don’t want to leave. When we’re stuck in our room, we end up yelling at the kids. Coming here feels like a breath of fresh air; the children can play.” A parent attending L’Espace Petits Pas.

In 2024, more than 201 sessions were held across 6 sites, reaching around 757 families and 1,446 children.

Financial partners: Région Île-de-France, Agence Régionale de Santé (ARS), Fondation de France, Caisse d’Allocations Familiales, Samusocial, the PMI Foundation, Seine Saint-Denis Department.



The “Espace Petits Pas” playground

“YALLA! FOR THE RIGHTS OF THE CHILD”: CHILDREN USE A VIDEO COMPETITION TO STAND UP TO BULLYING

The “Film your rights with Yalla!” competition inspired one Year 4 class in Colombes to create a hard-hitting short film on the topic of school bullying. With support from the Asmae team, who gave them information about their rights, they produced a socially conscious project aimed at raising awareness of this widespread problem.

The “Film your rights with Yalla!” competition was a major success: it achieved the goal of raising children’s awareness of their rights, and – in the spirit of all our projects – encouraged them to make a full statement on this issue. All participating classes benefited from awareness sessions on the rights of the child, run by the Asmae team. These interactive, educational sessions allowed the children to explore and choose the rights they wanted to promote.

Inspired by their own experiences and with a sensitivity to the issue of bullying, the pupils of a Year 4 class in Colombes focused their creativity on this theme. Having explored various aspects of bullying and reflecting on its consequences, they wrote a powerful script that caught the attention of the jury for the “Film your Rights with Yalla!” competition. It was selected, and then made into a short, thought-provoking film.

With the support of two audiovisual professionals, the students filmed their project over the course of a day. Everyone took an active part, taking on different roles in makeup, as extras, as script or clapperboard artists, and – of course as actors. This gave them a behind-the-scenes insight into a professional film shoot, enabling them all to become actors of change. The result of their dedication and enthusiasm was a hard-hitting video aimed at raising other children’s awareness of the scourge of bullying. Watch it now!

→ Scan this QR code to see the video



Financial partners: Fond’actions We Act For Kids and Okaidi, Aplim, Clarins, Technip Energies endowment fund, Mille et Un Repas, Île-de-France Region, Paris CAF (family allowance fund), Regional Academic Delegation for Youth, Engagement, and Sports (DRAJES), Department of Seine-Saint-Denis.

OUR NETWORKS AND ADVOCACY

To make progress in education, child protection and training/integration around the world, we're part of various networks, both in France and internationally. This involvement promotes the exchange of best practice ideas, producing reference documents, creating partnerships, and makes it possible to carry out advocacy work with public bodies on an international, national and local level.



Groupe Enfance

The Groupe Enfance (childhood group) brings together 19 NGOs involved in protecting the Rights of the Child internationally. Having come together ten years ago, they work with one main mission in mind: to strengthen the capacities of international humanitarian players.

The Groupe Enfance runs regular exchanges of best practice to enable peer-to-peer sharing of programmes and experiments run in different regions of the world and in numerous areas of operation.



"This was the area in which I was able to contribute my expertise and knowledge of our organisation. The "Best Practices for Safe and Meaningful Child Participation" poster was produced with the help of Asmae. Participation – a key topic for the Groupe Enfance – has been the subject of many discussions and exchanges of best practice. This poster was the result of this consultative process, aiming to raise awareness of best practice for safe and meaningful child participation, and to support international humanitarian professionals seeking to work more effectively in this area. The poster is accompanied by a full guide that explains these practices with practical examples. Both tools have been translated into English to make them available to as many people as possible."

Natacha Seret, Head of Missions and Projects at Asmae.



The F3E network

Founded 30 years ago, the F3E network aims to improve practices and enhance the skills of individuals and organisations working for social change. The F3E brings together over 100 civil society organisations, including associations such as Asmae, local authorities, foundations and an international trade union. The F3E is a pioneer in France in terms of integrating gender considerations into international solidarity programmes.

The F3E's publishing arm produced the cross-cutting review "Apprendre sur le genre: Effets et leviers pour des études genre transformatives" (Learning About Gender: Effects and Levers for Transformative Gender Studies), authored by Virginie Kremer Morgante and Dieneba Ouedraogo.



"As a member of the working committee, I contributed to the development of this review; for example, by providing support for scoping and monitoring the consultants' work. The review focused specifically on the twenty or so "Gender" studies that the F3E has supported since 2018. It aims to inform and support international social

support organisations as they learn about gender issues by describing the various types of studies conducted, the leverage effect they can have, and the impact or changes they've brought about for the organisations involved."

Perrine Bacchetta Savoie, Head of Expertise and Programs, Gender Officer at Asmae.

We are also members of these networks



HR Circle - CHD

Created in 1983, Coordination Humanitaire et Développement (CHD) represents more than 56 organisations that carry out emergency humanitarian, reconstruction and/or development projects around the world. CHD – a founding member of Coordination SUD – acts as a quarterly forum for the human resources functions of NGOs. Asmae has participated in all HR circle meetings since March 2023.

In 2024, members discussed a range of topics including the organisational structure of the HR function in NGOs, tools to streamline HR management, profit-sharing agreements and relations with staff representative bodies, the "Bourse de l'emploi" job board and current developments in current developments in global funding policies and operating contexts.



"The goal is to share best practice and questions. Specific working groups can be set up, with input from NGO or external experts, as needed. Discussion points may also feed into joint advocacy efforts – for example, raising awareness among French and European funding agencies about issues such as expatriation conditions, employment status, and coverage of HR and support costs."

Isabelle Guillot, Human Resources Manager at Asmae.

Our resources

22

Protection of children against bullying and sexual abuse

23

Our employee and volunteer teams

24

Volunteers in action
Communication

25

Our financial partners

26-27

Financial report



PROTECTION OF CHILDREN AGAINST BULLYING AND SEXUAL ABUSE

Since its foundation, Asmae has been working to protect and educate children and young people. In 2025, the organisation is reaching a new milestone by reinforcing its long-standing commitment to children and young people by launching the Prevention and Protection Policy against Bullying, Exploitation and Sexual Abuse (PHEAS) – a crucial policy designed to prevent and combat these serious issues.

THREE KEY QUESTIONS FOR JEANNE VÉRONIQUE LE GUELLEC, TECHNICAL ADVISOR ON EDUCATION AND CHILD PROTECTION AT ASMAE.



Why is it important for an organisation like Asmae to have Policy on the prevention and protection against Harassment, Exploitation and Sexual Abuse?

Asmae has been working for over 40 years to protect the most vulnerable children and youth in France and abroad. Asmae also seek to promote a safe and healthy working environment for our staff and partners, and for the people we support through our programmes. This policy clarifies Asmae's stance on these various issues.

What are the core principles of this policy?

PHEAS is based on three fundamental principles: non-discrimination and equality, respect for and protection of human rights, and the “do no harm principle”, which requires humanitarian and development workers to minimise any harm that their presence, support and services might unintentionally cause to projects' targets and their environment.

How is it implemented?

The policy is focused on three key areas: Prevent, Protect and Respond.

Prevention is based on risk assessments within our own organisational structures, and our operational partners structures and our projects. The aim is to reduce the likelihood that worrying and harmful situations may arise. Prevention also takes the form of awareness-raising work on the importance of not concealing potentially worrying behaviour. It also involves widespread sharing of our reporting processes, which can be done via a secure email address, a dedicated telephone number and physical complaint boxes. Lastly, prevention is achieved via safer recruitment practices, such as mandatory training of all staff and partners on Harassment, exploitation and abuse.

The second area – Protect – involves fostering an organisational culture of safeguarding. This involves a clear assignment of responsibilities for implementing the PHEAS policy, not only among individual employees, but also at organisational level via the committee responsible for tracking the implementation of the policy and managing potentially worrying situations. We pay particular attention to ensuring that allegations and investigations are handled effectively, focusing on the protection of whistleblowers, victims and alleged perpetrators.

Lastly, with regard to the third area – Respond – we recognise that zero risk does not exist. In the event of a confirmed incident, therefore, our PHEAS policy ensures a response that includes support for whistleblowers, victims and alleged perpetrators. This support is based on the principles of confidential enquiries, attention to health and well-being, and the safety of all parties involved.



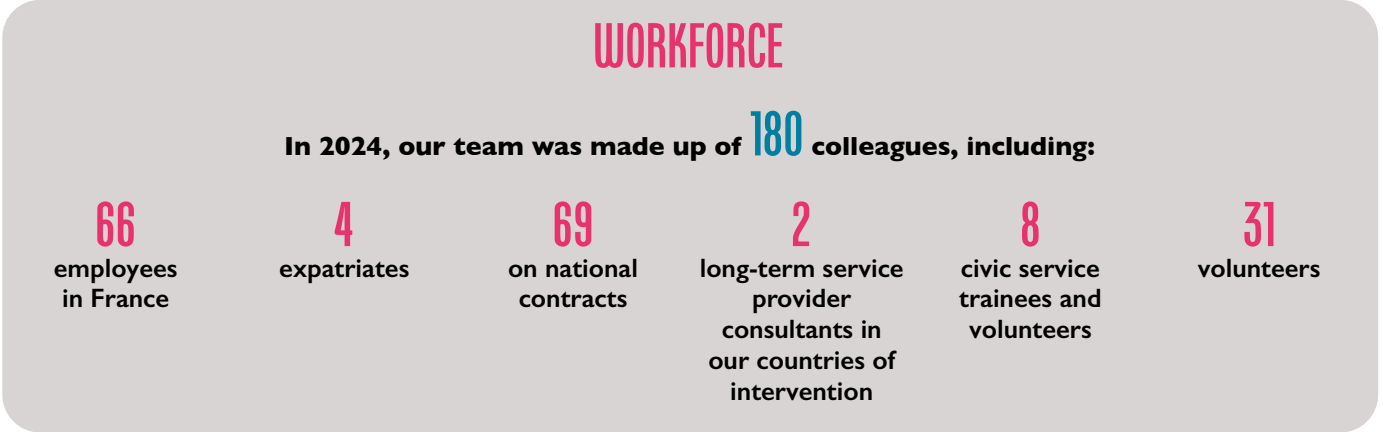
OUR EMPLOYEES AND VOLUNTEER TEAMS

ASMAE'S HR POLICY BRINGS GREATER EFFICIENCY AND UNITY

In May 2024, Asmae published the first edition of its HR Policy, a general framework defining the broad outlines for human resources management within the association, in France and in its seven countries of intervention. This HR Policy applies to all activities and to any employee, intern, civic service worker or volunteer within their area of contribution. It embodies Asmae's HR vision and core values. It ensures that HR makes a coherent, structured contribution to the association's missions, and meets the needs of employees through their careers at Asmae, while complying with legal requirements and donor expectations. From recruitment through to support for departing staff, we ensure that every area is covered: administration and payroll, remuneration, development, loyalty, working conditions and quality of life.

Practically speaking, how would you describe working at Asmae?

“Working at Asmae means being in an environment in which initiative, autonomy and professionalism are encouraged. We nurture trust, kindness and a collaborative spirit between teams. Working in our association also means putting your skills to work to ensure the long-term development and well-being of the most vulnerable children and young people. We also consider our teams to be of central importance. After all, they're the people who help Asmae to grow, day after day, and enable it to carry out its social mission. So we apply non-negotiable principles to the way we manage our people: transparency, fairness, non-discrimination and individual accountability.”
Isabelle Guillot, Human Resources Manager



BOARD OF DIRECTORS

Officers:
Catherine Larrieu – Chair
Jean-Louis Medioni – Deputy Chair
Etienne Durand – Treasurer
Catherine Alvarez – Secretary

Other board members:
Matthieu de Bénazé
Soheila Ghaderi-Mameli
Denis Legat
Anna Marme
Sophie Prado
Bruno Rebelle
Elisabeth Simond-Cote
Anne-Lise Sirvain

MANAGEMENT COMMITTEE:

Christian Blanchard – International Action Manager
Sophie Royer – La Chrysalide Manager
Adrien Sallé – Director General
Nha Quyen Seguin – Secretary General
Pierre Villelongue – Director of Communications and Resources

COUNTRY DIRECTORS

-  Burkina Faso: Emilie Corrand
-  Ivory Coast: Rozenn Coraud Kiendrebeogo
-  Egypt: Nashwa Fayek Ibrahim
-  Lebanon: Nadeem Khaddaj
-  Madagascar: Arcancia Clappe
-  Philippines: Michael E. Bismar

VOLUNTEERS IN ACTION

SUPPORTING CHILDREN: VOLUNTEERS' EFFECTIVE COMMITMENT - 2024 "GRANDE SOIRÉE DE GÉNÉROSITÉ" EVENING

What could be more inspiring than coming together to secure funding for projects which enable children around the world to build their future? That's the challenge that Asmae's volunteers took on.

The "Grande Soirée de Générosité" evening, held by our volunteers on 27 November 2024, was a major success. Donors, partners and friends rallied around a common cause: supporting children and young people affected by crises. The initiative raised €90,000. This amount exceeds all expectations, and reflects the power of social solidarity combined with generosity.

For several weeks, volunteers poured their hearts and souls into preparations for this event. Their dedication and enthusiasm transformed the venue into a warm and welcoming place in which to welcome guests. Their reassuring presence helped to create the friendly atmosphere that was such a key part of the success of the event.

The sum of €90,000 raised through this exceptional event will provide new opportunities to those who need them most. Children and young people find Asmae's support gives them the resources they need to cope with the crises they have endured and to become autonomous.

Asmae's volunteer and employee teams have shown that together, they can accomplish great things. This evening of support and generosity will remain etched in the memory as a testament to the importance of volunteer commitment.



Thanks to the committed efforts of the volunteers, the "Grande Soirée de Générosité" evening was a real success, raising €90,000 for projects aimed at children and young people.

THE COMMUNICATION

CHILDREN'S CONFIDENCE IN THE FUTURE: FIGURES FROM THE ASMAE BAROMETER

The first edition of the "Children's Confidence in Their Future" Barometer was produced in September 2024 by the Odoxa Institute*

Children in France, optimistic and committed: strong confidence in the future and in their environment

Contrary to the well-rehearsed clichés, the younger generation is resolutely optimistic about its future and eager to get involved in major causes. 82% of children say they have confidence in the future – a figure significantly higher (by 27 points) than that of their much more pessimistic parents.

80% wish to become involved in important causes such as animal protection (No.1), the fight against poverty and the prevention of bullying (No.2), and environmental protection (No.3).

An optimism tinged with significant fear in the face of current social realities

Despite this optimism, 87% of children experience major personal fears such as insecurity and academic underachievement. More broadly, the prospect of a war involving their country greatly worries young people (33%, their third-largest area of concern).

They are also very sensitive to the injustices suffered by other children around the world, especially those who have suffered abuse or been victims of war.

Another "contemporary" concern is the fear of being a victim of bullying in the real world or online, which affects 23% of children!

Bullying: a scourge with devastating consequences.

Bullying has a major impact on young victims, radically changing their world view and confidence in the future, as well as their relationships with their family and school.

Children who have suffered bullying are twice as likely to be distrustful of their future (29%, compared to 15% of non-victims) and more sensitive to injustice (81%, compared to 68%). They also feel less respected at school (52%, compared to 17%) and less safe (33%, compared to 11%). Their trust in their loved ones and authority figures is significantly weakened, with levels on average 20 points lower than those of other children.

*based on a sample of 801 children aged 8 to 15 and 425 parents.

OUR FINANCIAL PARTNERS

MANY THANKS TO ALL THE PRIVATE DONORS, COMPANIES, FOUNDATIONS AND ASSOCIATIONS THAT CONTINUE TO SUPPORT US!



GEOY Endowment fund



INTERVIEW WITH JÉRÔME FOUGERAS LAVERGNOLLE PRESIDENT OF THE SANCTA DEVOTA FOUNDATION

You're supporting the Cap Jeunesse programme in Madagascar. Can you tell us about your experience with this first phase?

The Cap Jeunesse programme, launched in 2021 in Madagascar by Asmae, has achieved its objectives by supporting vulnerable young people aged 14 to 22. Its safe, stimulating environment and holistic approach has enabled them to acquire essential personal and professional skills that promote their social and professional integration. We have been particularly impressed by the expertise and commitment of Asmae's teams, who have effectively addressed local challenges during this first phase. Results have been both concrete and measurable, and have been regularly shared with the Foundation, making this collaboration all the more rewarding and constructive.

You have renewed your commitment. How does this partnership align with the Foundation's guidelines?

The partnership is fully aligned with the priorities of the Sancta Devota Foundation, especially in its support for individuals in precarious situations through education, with a focus on empowerment. The Cap Jeunesse programme in Madagascar embodies these values by offering vulnerable young people in this country tangible opportunities to develop their potential within their communities. It reflects our vision of sustainable and transformative impact for young people. We look forward to the next steps of this programme.

FINANCIAL REPORT

Thanks to the commitment of our Asmae teams, we have consolidated our financial viability and continued to implement our strategy, while managing a pressured funding environment.

STATEMENT OF INCOME BY ORIGIN AND USE		Net value 2023		Net value 2024		Net change	
		TOTAL	including fundraising from the public	TOTAL	including fundraising from the public	TOTAL	including fundraising from the public
REVENUES BY ORIGIN							
1 REVENUE RELATED TO FUNDRAISING FROM THE PUBLIC		3 534	3 534	3 373	3 373	-5%	-5%
- Contributions without benefits in return		6	6	4	4	-37%	-37%
- Monetary donations		2 379	2 379	2 549	2 549	7%	7%
- Bequests, gifts and life insurance		1 032	1 032	712	712	-31%	-31%
- Corporate philanthropy							
- Other income not related to fundraising from the public		117	117	108	108	-7%	-7%
2 REVENUES NOT RELATED TO FUNDRAISING FROM THE PUBLIC		1 512		1 443		-5%	
- Subsidies and other private aid		1 018		618		-39%	
- Other revenues not related to fundraising from the public		494		825		67%	
3 SUBSIDIES AND OTHER PUBLIC AID		3 485		3 956		13%	
- Allocated France		1 882		2 136		13%	
- Allocated overseas		1 603		1 820		13%	
4 REVERSAL OF PROVISIONS AND IMPAIRMENTS							
DEFICIT							
TOTAL REVENUES		8 531	3 534	8 771	3 373	3%	-5%
EXPENDITURES BY TYPE							
1 SOCIAL MISSION		6 538	2 296	6 844	2 121	5%	-8%
- In France		3 035	1 070	2 806	870	-8%	-19%
- Overseas		3 503	1 226	4 039	1 252	15%	2%
2 FUNDRAISING COSTS		1 205	999	1 227	1 048	2%	5%
3 OPERATING COSTS		586	185	646	200	10%	8%
4 PROVISIONS AND IMPAIRMENTS		32	0	38	0	0%	
5 INCOME TAX		21	0	6	0	-71%	
SURPLUS		149	54	10	3		
TOTAL EXPENSES		8 531	3 534	8 771	3 373	3%	-5%

Figures rounded up to the nearest k€.

- In 2024, revenues rose slightly (+ 3%), 2024 being a full year for the utilization of subsidies from certain programs launched at the end of 2023. However, revenues from public generosity and private subsidies are down (-5%).The breakdown between these resources of private origin (45%) and public subsidies (45%) is well balanced.
- Expenses, also up slightly, are focused as much as possible on the social mission: for example, expenses for implementing the social mission have risen sharply abroad (+15%). On the other hand, fundraising and operating costs are strictly controlled, despite the decline in funding - including public funding - and the growing need for co-financing of the social mission.

VOLUNTARY WORK AND FREE SERVICES

Volunteer work and free services provided by organizations or professionals help the association to keep operating costs under control, with a stable level between 2023 and 2024.

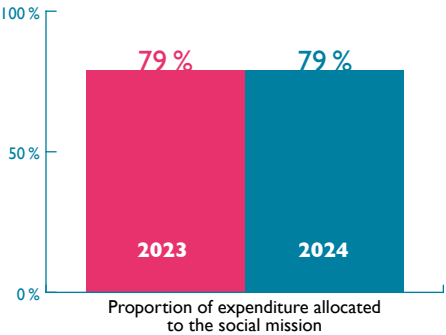
Valuation of voluntary contributions in kind	2023	2024
Valuation of volunteering	172	164
Valuation of services in kind	457	375
TOTAL	629	539

Figures rounded up to the nearest k€.

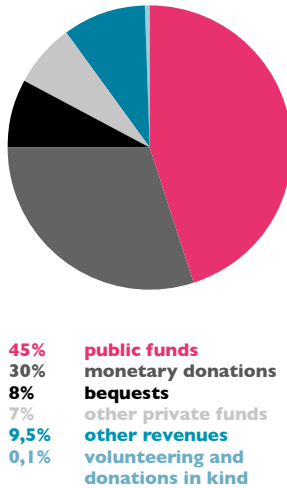
RATIOS

The rate of allocation of expenditure to the social mission has been maintained at the same level as in 2023, despite the pressure on funding, thanks to rigorous management and the day-to-day involvement of our teams in the implementation of activities linked to the social mission.

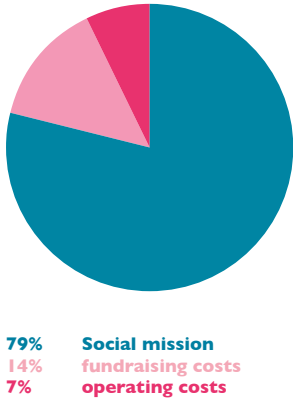
Ratio monitoring	2023	2024
Proportion of expenditure allocated to the social mission	67%	68%
Proportion of expenditure allocated to the social mission (excluding Bobigny)	79%	79%
Fundraising costs / Total income for the year	13%	12%
Costs of fundraising from the public/Revenues from the public	24%	23%
Operating expenditure	6%	7%



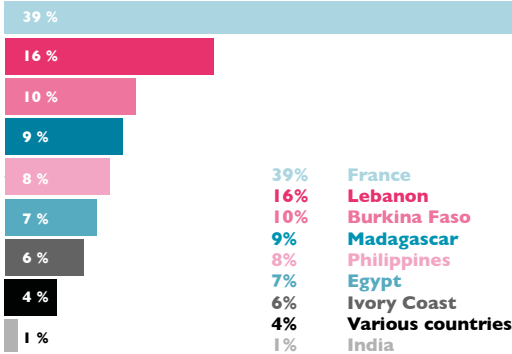
DISTRIBUTION OF REVENUES



DISTRIBUTION OF EXPENDITURE



DISTRIBUTION OF EXPENDITURE BY COUNTRY



BALANCE SHEET

BILAN	2023	2024	%
ASSETS			
SUB-TOTAL Fixed assets	1 446	1 190	- 18%
Tangible and intangible assets	170	134	
Assets received from bequests	890	671	
Financial assets	386	385	
SUB-TOTAL Current assets	11 373	11 373	+ 0%
Inventory and amounts outstanding	5	4	
Receivables	3 339	2 665	
Receivables from bequests	249	273	
Investments and cash assets	7 703	8 349	
Deferred charges	77	82	
TOTAL ASSETS	12 819	12 563	- 2%
LIABILITIES			
SUB-TOTAL Association funds and reserves	5 256	5 265	+ 0%
Association funds and reserves	5 107	5 255	
Outcome for the financial year	149	10	
SUB-TOTAL Debts	7 563	7 298	- 4%
TOTAL LIABILITIES	12 819	12 563	- 2%

Figures rounded up to the nearest k€.

The break-even result (+10k€) reflects the association’s continuous improvement in financial control and efficient management, as well as fine-tuned operational planning enabling us to devote as much funding as possible to project implementation.

The association’s financial solidity will enable us to finalize the implementation of our 2022-2025 strategic plan and prepare for the future with a view to continuing to consolidate the quality of our action in the field, while developing our impact in the service of vulnerable children and young people.

REMINDER

The association’s accounts are kept by the accounting firm Fideliance, approved by the statutory auditor Pouget et Soubirous, and validated at the Annual General Meeting of May 22, 2025. The budget is implemented and monitored by the Executive Committee, under the supervision of the Treasurer and the President. The financial report is available on request or as a download from the association’s website.

TRUST AND TRANSPARENCY



Asmae has been awarded the Don en confiance label, which means that Asmae complies with the four main principles: respect for donors, transparency, probity and disinterestedness, and quest for efficiency.

Source:

Page 4: 22: UNICEF; 23: CIDFP; 24: Sénat, octobre 2024; 25: UNICEF; 26: UNICEF; 27: Insee | Page 9: Ivory Coast: 1: MICS; 2: Ministère de la Famille, de la Femme et de l’Enfant, Côte d’Ivoire, 2023; 3: AFD | Page 10: Burkina Faso: 4: Ministère de l’Economie; 5: UNESCO; 6: UNICEF | Page 11: Madagascar: 7: UNICEF; 8: Association Grandir Ailleurs; 9: UNICEF, 2018 | Page 12: Egypt: 10: Amnesty; 11: Global Partnership; 12: Banque Mondiale, 2023 | Page 13: Lebanon: 13: Banque Mondiale, juin 2024; 14: UNICEF, janvier 2025; 15: UNICEF, décembre 2024 | Page 14: India: 16: UNICEF; 17: BICE, 2019; 18: Center for Monitoring Indian Economy, 2019 | Page 15: Philippines: 19: Association Caméléon; 20: AFD; 21: Association Caméléon



Asmae Association Sœur Emmanuelle

Asmae is an association formed under the French law of 1901, recognised to be of public interest and authorised to receive bequests, donations and gifts.



asmae.fr



Immeuble Le Méliès – 259-261, rue de Paris
93100 Montreuil, France
Tel.: +33 (0)1 70 32 02 50